



Ticker: 3092
TASI Main Market

Quarterly Earnings Release

For The Three Months
Period Ended March 31, 2026



Financial Results Overview

▼ -20.4%

Net profit down from
₹75,682,159 (Q1 2025) to
₹60,236,682 (Q1 2026)

Key Highlights

(All Numbers in Millions of ₹, unless otherwise stated)

Revenue	Q1 2026 ₹ 199.8	Q1 2025 ₹ 225.2	Change ▼ 11.3%
Operating Profit	Q1 2026 ₹ 61.6	Q1 2025 ₹ 76.9	Change ▼ 19.8%
Net Profit	Q1 2026 ₹ 60.2	Q1 2025 ₹ 75.7	Change ▼ 20.4%
Basic EPS (₹)	Q1 2026 ₹ 0.50	Q1 2025 ₹ 0.63	Change ▼ 20.4%

Dear Valued Shareholders

Riyadh Cement Company reported Q1 2026 results that reflected pricing pressure in a more competitive market environment, while maintaining a strong financial position.

Revenue reached ₪200 million, representing an 11.3% year-on-year decline, mainly due to pricing pressure. This was partly offset by continued demand linked to construction activity in the Kingdom.

Profitability declined in line with revenue trends. Gross profit stood at ₪71.6 million, down 16.6% year-on-year. Operating profit stood at ₪61.6 million. Net profit totaled ₪60.2 million, down 20.4% year-on-year, reflecting margin compression.

The Company maintained a strong balance sheet. Total assets increased by 5.0% year-on-year to ₪1.99 billion, while shareholders' equity rose by 3.5% to ₪1.78 billion. Working capital increased by 11.6%, providing additional short-term financial flexibility. Leverage remained low, with minimal debt, and cash balances increased during the period despite higher operating and investment cash outflows.

During the quarter, the Company signed a contract for the Natural Gas Conversion Project under the Liquid Fuel Displacement Program, with a total value of ₪59.4 million (excluding VAT) and a duration of 12 months. This project supports the Company's ongoing initiatives to enhance operational efficiency and energy cost optimization.

Looking ahead, The Company remains focused on cost optimization, operational efficiency, and disciplined capital management to support margins and preserve financial strength. Management will continue to monitor market conditions, pricing trends, and demand levels, and will take appropriate actions to protect long-term shareholder value.



Eng. Shoeil Bin Jarallah Al Ayed
Chief Executive Officer

Financial Performance Summary

Balance Sheet (All Numbers in Millions of ﷲ)

	Q1 2026	Dec 2025	%
Cash & Equivalents ¹	89.9	62.0	▲ 45.0%
Working Capital ²	584.5	523.9	▲ 11.6%
Total Assets	1,991.8	1,896.9	▲ 5.00%
Total Liabilities	213.3	178.7	▲ 19.4%
Total Shareholders' Equity	1,778.4	1,718.2	▲ 3.5%

Income Statement (All Numbers in Millions of ﷲ)

	Q1 2026	Q1 2025	%
Revenue	199.8	225.2	▼ 11.3%
Gross Profit	71.6	85.9	▼ 16.6%
Operating Profit	61.6	76.9	▼ 19.8%
Net Profit	60.2	75.7	▼ 20.4%

Cash Flows Statement (All Numbers in Millions of ﷲ)

	Q1 2026	Q1 2025
Net Cash from Operating Activities	68.4	86.3
Net Cash from Investing Activities	(39.8)	(2.2)
Net Cash from Financing Activities	(0.7)	(0.12)
Free Cash Flow ³	38.8	53.9

[1] Cash and cash equivalents

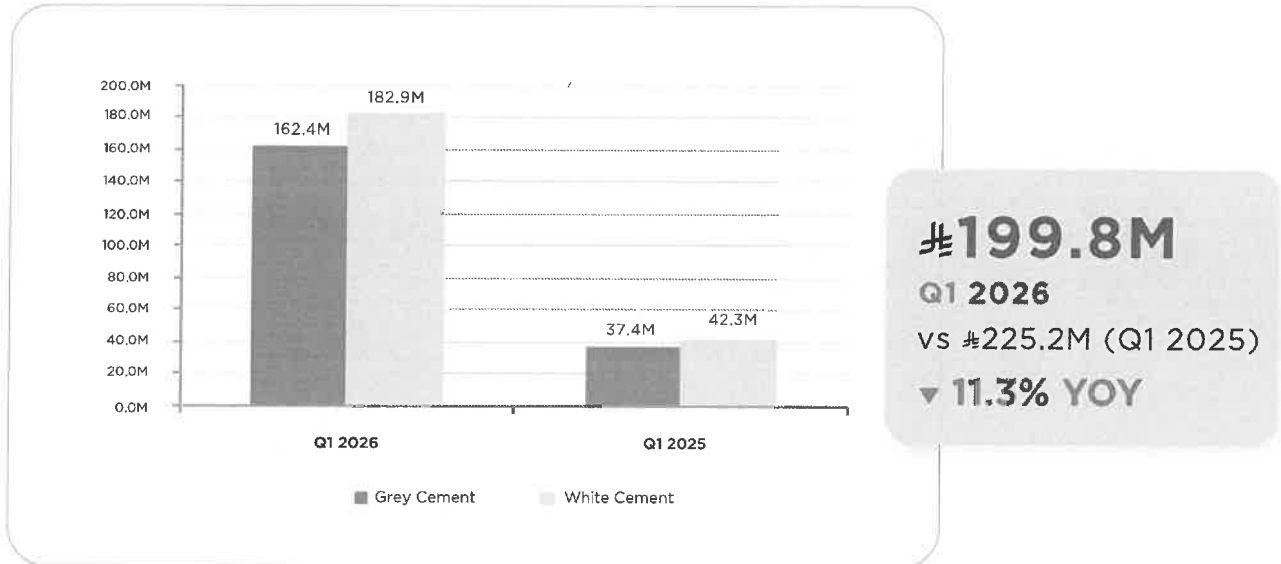
[2] Working capital = Current assets - Current liabilities

[3] Free cash flow = Net cash from operating activities - Capital expenditures

Segment Information

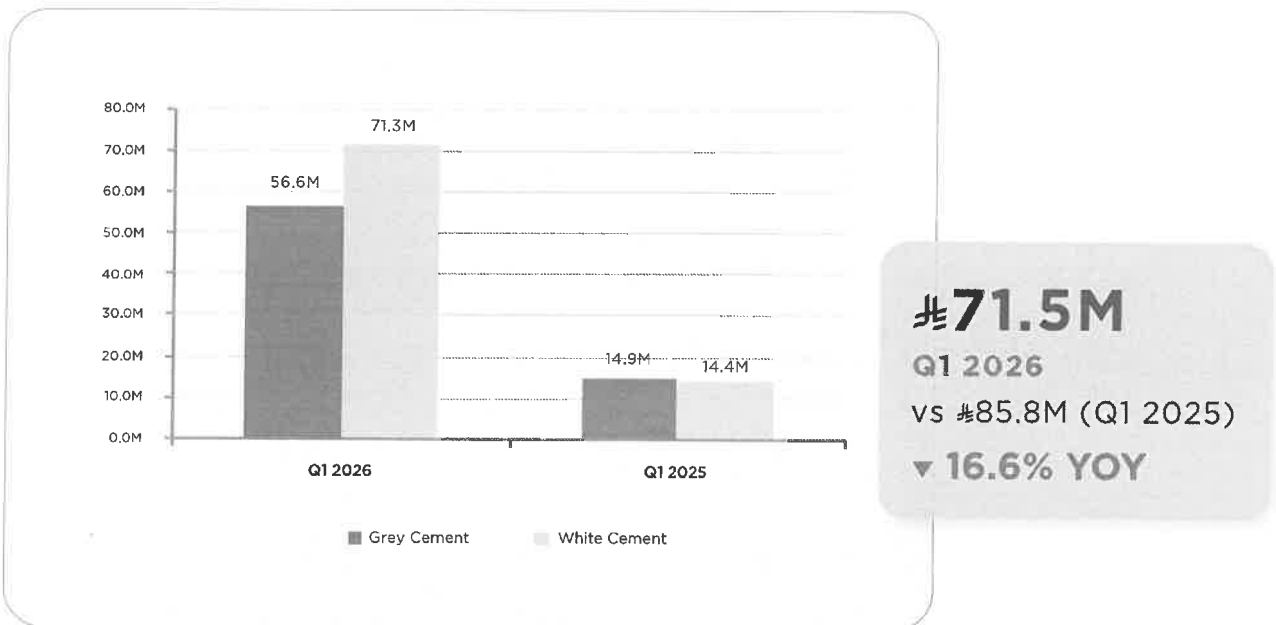
Revenue based on segments

All figures in **ﷲ** Millions (M)



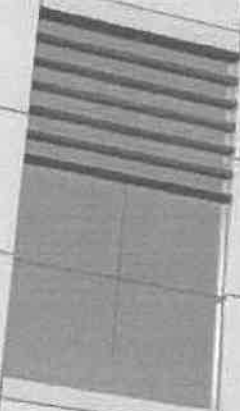
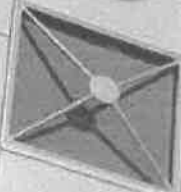
Gross Profit based on segments

All figures in **ﷲ** Millions (M)





اسمنت الرياض
RIYADH CEMENT



About Riyadh Cement

Riyadh Cement Company (RCC) is headquartered in Riyadh, Kingdom of Saudi Arabia, with production facilities located in Al-Muzahmiyah Governorate. The Company produces grey and white cement and serves primarily the domestic market.

RCC operates through three main business activities:



Grey Cement Production

Two lines with ~3.4 million tons annual capacity.



White Cement Production

~1 million tons capacity, expanded in 2019.



Cement Trading & Distribution

Nationwide distribution, with ~99% of sales in Saudi Arabia.

In addition, the Company provides maintenance and technical support services related to its industrial facilities in accordance with its Articles of Association.

RCC supplies cement to infrastructure, real estate, industrial, and public sector projects across its operating markets.

For further information, visit riyadhcement.com.sa
Investor enquiries: IR@riyadhcement.com

Disclaimer

This document has been prepared by Riyadh Cement Company (the “Company”) for general informational purposes only. It does not constitute an offer, invitation, solicitation, or recommendation to subscribe for, purchase, or dispose of any securities of the Company in any jurisdiction.

The financial information contained herein is derived from the Company’s reviewed interim consolidated financial statements for the three-month period ended 31 March 2026, which have been prepared in accordance with International Financial Reporting Standards (IFRS) as endorsed in the Kingdom of Saudi Arabia and other standards issued by SOCPA. Readers should refer to the fully audited financial statements and accompanying notes for complete information. All amounts are presented in Saudi Riyals (ﷲ) unless otherwise stated.

While the Company has taken reasonable care in preparing this document, no representation or warranty is made as to the completeness of the information provided. This document should be read in conjunction with the Company’s official disclosures published on the Saudi Exchange (Tadawul).

This document may contain forward-looking statements based on current expectations and assumptions. Such statements involve known and unknown risks and uncertainties that may cause actual results to differ materially from those expressed or implied. The Company does not undertake any obligation to update forward-looking statements, except as required by applicable laws and regulations.